

Jurassic volcano-sedimentary serie in inner Albanides

İç "Albanides"lerdeki Jura volkano-sedimanter seri (ofiyolit).

ALAUDİN KODRA	Ministry of Industry and Mining, Tirana, Albania
VEHAP BEHZANİ	Institute of Geological Research, Tirana, Albania.
HALİL HALLAÇLI	Institute of Geological Research, Tirana, Albania
PANO ÇAKALLI	Institute of Geological Research, Tirana, Albania
KADRİ GJATA	Institute of Geological Research, Tirana, Albania

ABSTRACT: Volcano-sedimentary serie is situated in peripheral parts of ophiolites of the mirdita zone. It is normally set above the Triassic- Jurassic carbonaceous basement and is tectonically covered by the ultrabasic massifs of the ophiolitic complex.

ÖZ: Volkano-sedimanter seri "Mirdita" kuşağındaki ofiyolitlerin kabuğunda yer almaktadır. Bu, düzenli biçimde organik Trias-Jura üstünde yer almakta olup ofiyolitik kompleksin ultrabazik masifleri ile tektonik olarak örtülmüşlerdir.

INTRODUCTION

The following two main structural units are distinguished in the geological structure of Albanides: Outer Albanides and Inner Albanides. Mirdita, Gashi and Korabi tectonic zones belong to inner Albanides. The Mirdita zone, with wide extension of ophiolites, is the main ore-bearing zone of Albania (Geology of Albania, 1982).

This paper treats the problems of the age, spatial position and the construction of Jurassic volcano-sedimentary serie, which is encountered in the peripheral parts of ophiolites of the Mirdita zone (figure. 1).

The Jurassic volcano-sedimentary serie is almost everywhere limited by the rocks of the Triassic-Jurassic carbonaceous serie on one flank (its basement) and by the ultrabasic rocks of the ophiolitic complex on the other (its cover).

Basement of Volcano-Sedimentary Serie

Complete section which build up the basement of Jurassic volcano-sedimentary serie are developed in the eastern flank of the Mirdita zone (Kodra, A. etc. 1980; Gjata Th., etc., 1987) from bottom to top as follows (Fig.2).

-Paleozoic schists.

-Conglomerates-Sandstones of Permian -Verfenian.

- Volcano-sedimentary rocks of Verfenian. The volcanics consist of olivine diabases, porphyry diabases, andesites, dacites up to liparites. Petrochemically, the rocks belong to basic-acid serie and are highly alcalinic.

-Sandstone, sandy limestones and dolomites of Verfenian- Anisian.

- Radiolarites and limestones with cherts of Anisian and Ladinian. The phenomena of the Anisian volcanism and the Ladinian tuffs exist also at some sectors.

- Stromatolitic limestones with megalodonts and Lithiotis (shallow sea facies) and the limestones with cherts (deep sea facies) of the Upper Triassic-Lower Liassic.

- Condensed Jurassic reddish limestones (2-20 m thick) with manganese nodules. The microfacies with *Involutina liassica*, embryonic ammonites, *Protoglobigerina*, *Cadosina* etc. is characteristic (Kodra, A., Gjata, K., Pirdeni, A., 1979; Shallo, M. etc., 1980; Shallo, M. etc., 1986).

Volcano-Sedimentary Serie

The sequences of volcano-sedimentary serie are most complicated, with facial variations both, in extension and verticality. In spite of that, several lithological packs, well correlated in the field can be distinguished

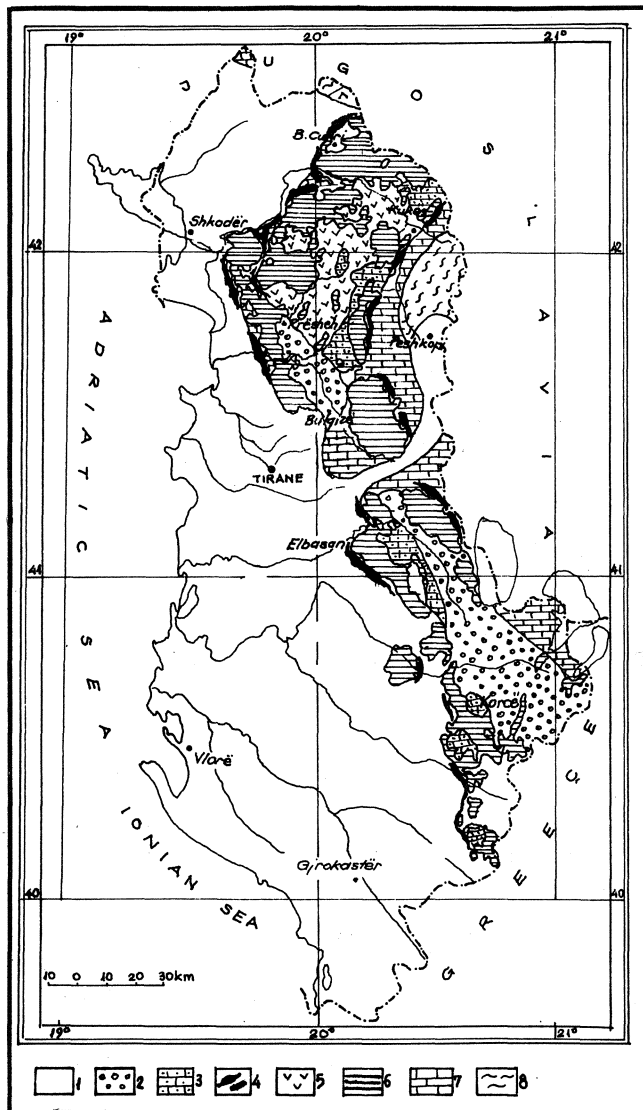


Figure 1. The Distribution of Jurassic Volcano-Sedimentary Serie in Inner Albanides.
 1. Outer Albanides, 2-8. Inner Albanides; 2. Tertiary molasses; 3. Cretaceous limestones; 4. Volcano-Sedimentary serie; 5. Ophiolitic gabbro-plagiograin-volcanic rocks. 6. Serpentinised ultramafics; 7. Triassic-Jurassic limestones; 8. Paleozoic schists.

among this serie. The good sections of volcano-sedimentary serie, with well preserved relations regarding limestone rocks of the basement as well as the ultrabasic ones, which cover them tectonically occur in several sectors such as Fushë Lurë (figure 3) (Kodra, Al, 1981; Kodra, Al, Peza, L. H., etc., 1986), Poravë (figure 4) (Kodra, A., Delaj, E., 1976; Bezhani, V., etc., 1986; Çakalli, P., etc. 1983).

Most foreign students have investigated Dinarides and Hellenides (Cadet, J.P., etc., 1980, etc.) are of the 80

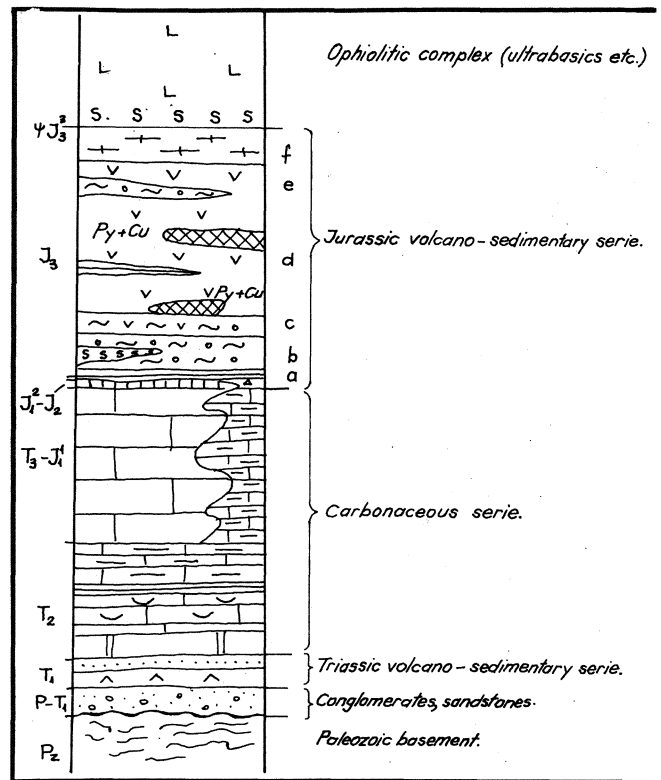


Figure 2. A generalized column of the volcano-sedimentary serie.

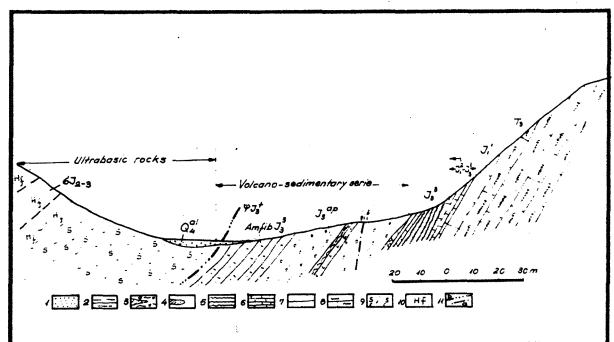


Figure 3, The Fushelura Section
 1. Alluvial deposits; 2. Amphibolites, granate-quartz-micaceous shales; 3. The argillite-detritus pack with volcanic bodies (the effusive-sedimentary serie); 4. Radiolaritic maris; 5. The tuffaceous radiolarites; 6. The reddish marly limestones. (The Fushëlura suite); 7. The massive limestones; 8. The thickbedded limestones; 9. The tectonical serpentinites; 10. The pseudostratified fresh harzburgites; 11a. The oversetting plane (of the obduction); lib. The fault.

same opinion as regards such a setting of volcano-sedimentary serie. It is supported also by the geophysical data (Langora, LI., etc., 1983).

JURASSIC VOLCANO-SEDIMENTARY SERIE

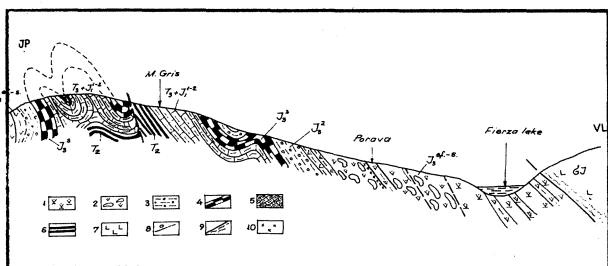


Figure 4. Coupe Géologique de Porav
 1-4. Volcano-sédimentaires série du Jurassique supérieur: 1. Diabases et schistes métamorphosés; 2. Diabases à pillow lava et schistes siliceux; 3. Schistes détritiques; 4. Banc de silice du Trias supérieur-Lias; 5. Schistes siliceux du Trias moyenne; 6. Harzburgites; 8. Disjonction tectonique; 9. Plan d'obduction; 10. Picrite.

Five different packs can be distinguished within volcanosedimentary serie:

a. Radiolaritic-tuffaceous pack (10-25 m). It is most characteristic and situated almost on top of Triassic-Jurassic carbonaceous serie (successively or with hard grounds) (Kodra, A., 1976, 1986).

b. Schistous pack with debris (20-150 m). It is represented by a chaotic formation (mélange). The sandstone, chert, limestone (Triassic volcanics and ophicalcites) are found in the argillitic matrix. The radiolaritic intercalations or the lenses of arkosic sandstone have been encountered in most cases as well.

In some sections occur also the intercalations of the basic and intermediate-alkaline (hialotrachyliparites, trachytes etc.) volcanics.

c. Diabase schistous pack (10-30 m). It consist of diabasic intercalations within schists.

d. Diabase-chert pack (50-500 m). It has a wide extension and occupies the largest volume of volcano-sedimentary serie.

The volcanics consist of diabases, albitic diabases, diabase porphyres, diabasic agglomeratic lavas etc. Of the most interest is the persence of the olivinic gabbro-diabases and picrites in the chert- diabase sequence of Poravë etc.

e. Diabasic pack with chert intercalations and schists with clasts (20-50 m). The packs c, d, e may be included in an individual pack -the diabase- chert one.

f. Metamorphic pack (20-100 m). This pack occur everywhere at the uppermost part of volcano-sedimentary serie. The study of this pack has been conducted by Shallo, M. (1970), who distinguishes the metamorphic rocks of green schist facies as well as the metamorphic rocks of staurolite -almandine subfacies and quartz- albite epidote almandine. The formation of metamorphic rocks is linked with the

paleomovement of ophiolites on the volcano-sedimentary basement in the end of Upper Jurassic.

In different levels (mainly in the lower ones) of volcano-sedimentary serie are located the ultrabasic (picritic) lavas, ultrabasic bodies, gabbros and gabbro-monzonites etc., penetrated by underscrust (Kodra, Al, Gjata, K., 1982; Gjata, K., etc. 1985 etc.).

The volcanics of volcano-sedimentary serie show a differentiated petrochemical evolution: from subalkaline basalts to basalt andesites and up to dacites - rhyolites (Ndojaj, L, 1982).

The Cover of the Volcano - Sedimentary Serie

The ultrabasic rocks of the ophiolitic complex of the Mirdita zone lie on the metamorphic pack of the top of volcano-sedimentary serie. Their contact represents a major tectonic and is expressed by the formation of amphibolites and foliated serpentinites (of tens metres thickness). The lowermost levels of ultrabasic tectonites composed of hornblites and fresh harzburgites occur, in general, at the contact with the volcano-sedimentary serie (Kodra, A., 1976; Gjata, K., Kodra, A., 1982 etc.).

The emplacement of the rocks of the ophiolitic complex on the volcano-sedimentary serie occur during the Tithonian and is linked with the immersion of the continental crust under the oceanic one during the period of compression which closes the marginal ocean basin during the Jurassic.

The Upper Tithonian-Berriasian flyschoidal formations are set with break on the Triassic- Jurassic carbonaceous rocks, Jurassic volcano-sedimentary ones and on the other rocks of ophiolitic complex (Figure 5).

Age. The rocks of the volcano-sedimentary serie lie

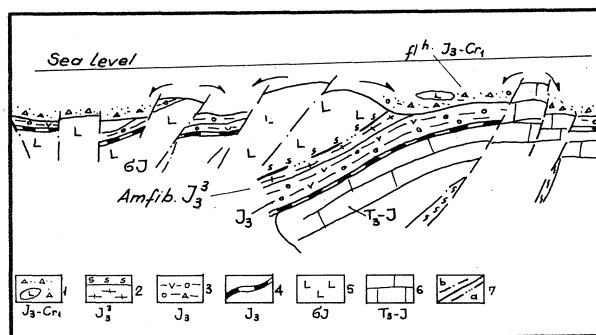


Figure 5. Relations of Early Flysch With Triassic-Jurassic Formations and Ophiolites
 1. Early conglom-breccia-marlaceous flysch with Tintinnides; 2. Amphibolites, serpentinites; 3. Argillite-detritus pack with volcanites; 4. Radiolarites-tuffogene rocks; 5. ophiolite; 6. Jurassic limestones; 7. Plain of obduction (a) and fault (b).

stratigraphically on top of the Lower-Middle Jurassic limestones and are covered by the Upper Tithonian flysch. Thus, the age of the volcano-sedimentary serie is of Upper Jurassic.

Copper mineralization. As regards Py-Cu massive mineralizations, the volcano-sedimentary serie is of the most interest. Recently, in the diabese-chert pack (fig. 2) are known two main mineralization levels. In various sectors of the spreading of volcano-sedimentary serie occur also two other levels of less important sulfide mineralization (Behzani, V., etc., 1986; Delaj, E., 1985; Hoxha, L. etc; 1983; Çakalli, P., etc., 1983; Avxhiu, R., etc., 1984)

CONCLUSIONS

The Jurassic volcano-sedimentary serie lies on the Triassic-Jurassic carbonaceous basement and is tectonically covered by the ultrabasic rocks of the ophiolitic complex.

In the lower part, volcano-sedimentary serie is composed of tuffaceous cherts and schists with debris (melange); in the middle part by diabese-cherts and in the upper one by amphibolites and metamorphic schiste.

REFERENCES

- Avxhiu, R., Bushati, S., Alikaj, P. (1984)
-The geophysical aid for the exploration of geological structural construction of volcano-sedimentary serie at the Morinë - Qinemak region. Bui. Shk. GjeoL, nr. 2, Tirana.
- Behzani, V., Çakalli, P., Ostrosi, B., Shabani, M., Milushi, I. (1986) -Some geological criteria of the prospecting of copper sulfide mineralization. Bui. Shk. GjeoL, nr. 4, Tirana.
- Çakalli, P., Behzani, V. (1983) -Some opinions on geology, structural construction and sulfide mineralization of the eastern belt of the Mirdita zone. Bui. Shk. GjeoL, nr. 3, Tirana.
- Çakalli, P., (1983) -Ndertime gjeologjik dhe perspektive per mineralizimin e bakrit te pasur ne rajonin Gjegnan- Mbasdeje. Disertacion, Tirana.
- Cadet, J.P., Bonneau, M., Charvet, J., Durr, S., Elter, P., Ferrière, J., Scandone, P., Thiebault, F. (1980) -Les chaines de la Mediterranee, moyenne, et orientale. Coll. C-S, Géologie des chaines alpines; issues de la Tethys. B.R.G.M., Paris.
- Delaj, E. (1985) -On the geology and sulfide mineralization of Palaj-Karçe; copper-bearing region. Bui. Shk. GjeoL, nr. 3, Tirana.
- Group of authors (1982) -Geological Map of PSR of Albania, scale: 1:200,000, Tirana.
- Hoxha, L., Lula, P., Zaçe, M., Gjeçi, K. (1983) -Traits de géologie et metalogénie des parties périphériques de la zone de Mirdita. Bui. Shk. GjeoL, nr. 4, Tirana.
- Gjata, Th., Theodorii, P., Kici, V., Marku, D., Pirdeni, A. (1987) -Stratigraphy and the formation conditions of the Triassic deposits in the Eastern Albanides. Bui. Shk. GjeoL, nr. 2, Tirana.
- Gjata, K. (1981) -Petrologjia e kompleksit ultrabazik-bazik të Mirditës perëndimore. Disertacion. Tirana.
- Gjata, K., Kodra, A., Pirdeni, A. (1980) -Géologie de certaines parties périphériques de la zone de Mirdita. Përmbl. Stud., nr 3, Tirana.
- Gjata, K., Kodra, A., Mustafa, F., Zhukri, E. (1985) -The intrusive relations of the ultrabasic rocks with the Triassic-Liassic carbonaceous rocks at the peripheral parts of the Mirdita zone and in the Korabi one. Bui. Shk. GjeoL, nr. 4, Tirana.
- Group of authors (1982) -Geology of Albania. Monography. Tirana.
- Karamata, S., Majer, V., Pamic, J. (1980) -Ophiolites of Yugoslavia. Ofioliti, Vol. 1. Tethyan ophiolites.
- Kodra, A. (1976) -A propos de Tâge Jurassique de la formation volcanogéno-sédimentaire de la zone de Mirdita. Përmbl. Stud. nr. 1, Tirana.
- Kodra, A., Delaj, E. (1976) -Des donnees nouvelles sur la structure geologique de la region de Poravë. Përmbl. Stud. nr. 4, Tirana.
- Modra, A., Gjata, K., Pirdeni, A., Jahja, B. (1979) -Les niveaux du Dogger-Malm dans la région de Martanesh (sur le flanc occidental du massif ultrabasique de Bulqiza). Përmbl. Stud., nr. 4, Tirana.
- Kodra, A., Shehu, B., Goci, L., Selimi R. (1980) -La géologie de la partie septentrionale de l'unité de Gjalicë (Kukës). Përmbl. Stud., nr. 3, Tirana.
- Kodra, A. (1981) -Les roches Jurassiques et Jurassico-Crétacées dans les régions N.-E. des Albanides (i Test des ophiolites de la zone de Mirdita). Përmbl. Stud., nr. 3, Tirana.
- Kodra, A., Gjata, K. (1982) -The ophiolites in the framework of the geotectonic evolution of inner Albanides. Bui. Shk. GjeoL, nr. 2, Tirana.
- Kodra, A., Peza, L.H., Pirdeni, A., Gjata, K. (1984) -New data on the Fushëlura profile. Bui. Shk. GjeoL, Nr. 3, Tirana.
- Kodra, A. (1986) -Gjeologjia dhe perspektiva e mineraleve të dobishme të rajonit Resk-Shistaveç (Kukës). Disertacion. Tirana.
- Langora, LL., Bushati, S., Likaj, N. (1983) -Some opinions on the shape of ophiolitic rocks of our country based on the interpreting of gravimetric and magnetometric observations. Bui. Shk. GjeoL, nr. 3, Tirana.
- Melo, V., Türku, I., Kote, Dh. (1971) -De l'âge Jurassique inférieur et moyen de la serie volcano-sédimentaire de la region Vithkuq-rehovë-Selenicë de Pishë. Bull. UT., ser. shk. nat., nr. 4, Tirana.

JURASSIC VOLCANO- SEDIMENTARY SERIE

- Ndojaj, I. GJ. (1982) -La petrochimie des volcanites du soubassement de l'association ophiolitique de Mirdita. Bui. Shk. Gjeol., nr. 2, Tirana.
- Petro, Th. (1986) -New data on the geology of the Shtyllë- TReskë-Qarr (Korçë) region. Bui. Shk. Gjeol., nr. 1, Tirana.
- Shallo, M. (1970) -Des certaines aspects génétiques et géologiques des gisements koltchedans volcano-sédimentaires l'Albanie. Përmbli. Stud., nr. 1, Tirana.
- Shallo, M. (1965) -Mbi marrëdhëniet e kontaktit midis shkëmbinjve "ultrabazike" të masivit të Kukësit

dhe formimeve efuzivo- sedimentare të triasikut të poshtëm- të mesëm të rajonit Surojl. Përml. Stud., nr. 1, Tirana.

- Shallo, M., Vranaj, A., Kati, P. (1986) -Manganese nodules within the Jurassic pelagic limestones of the Eastern Albanides. Bui. Shk. Gjeol., nr. 2, Tirana.

Makalenin Geliş Tarihi : 20.5.1988

Yayma Veriliş Tarihi : 21.12.1990

